



MARMALADE

Bonnie & Camille



Flower Girl - #KIT55050 Pattern: TB 151/ TB 151G Finished Quilt Measures 78" x 96"

Back in the good ol' days kids would jump off the bus and run into the house, dropping their books as they went, heading straight for the kitchen. Mom was usually there in her frilly apron, cooking something delicious. Jellies and jams were always a favorite. Depending on the season, it could be strawberry, raspberry, huckleberry or peach. Mom knew just how to make it so that when you spread butter on bread fresh out of the oven and smothered it with marmalade, you knew you were home.

*55050 13
Tangerine



*55056 13
Tangerine

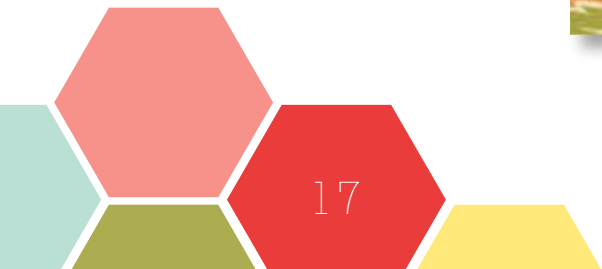


55054 13
Tangerine



55055 13
Cream Tangerine

moda





55054 12
Raspberry



55057 19
Tangerine Cream

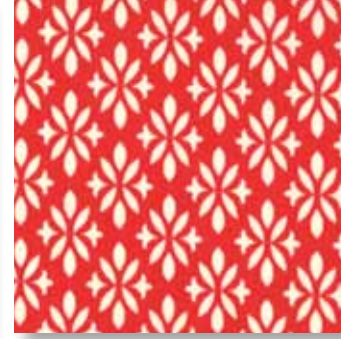
*55050 12
Raspberry



*55055 12
Raspberry



*55056 12
Raspberry



*55052 12
Raspberry



55051 11
Strawberry



55057 11
Strawberry



55056 11
Strawberry



*55050 11
Strawberry



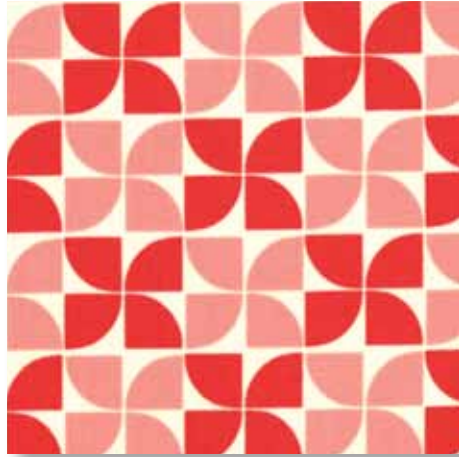
*55054 11
Strawberry



*55057 29
Strawberry Cream



*55053 11
Strawberry



*55051 19
Cream



*55052 11
Strawberry

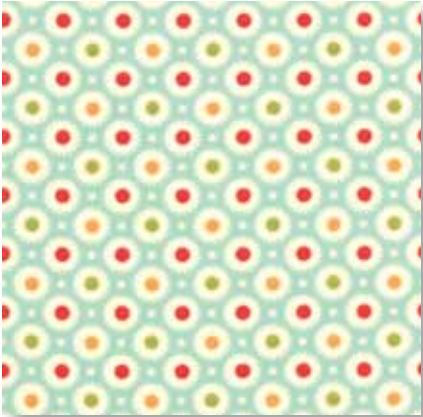


COATED Fabrics

55050 17C
Blueberry



55052 17C
Blueberry



55050 16C
Grey



55052 14C
Leaf



*55050 15
Lemon



*55056 14
Leaf



55053 16
Grey Leaf



55054 14
Leaf



55052 14
Leaf



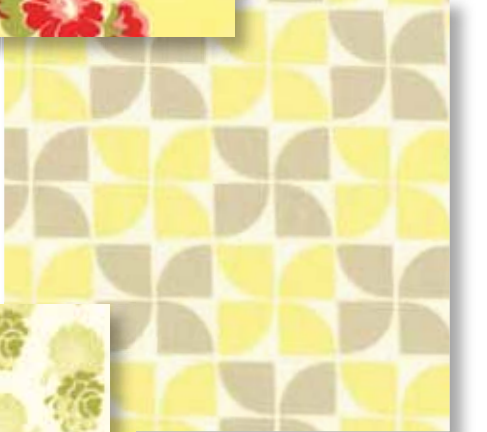
55054 15
Lemon



*55051 15
Lemon



55053 15
Grey Lemon



55055 14
Leaf



55050 16
Grey



*55056 16
Grey



moda

55057 17
Blueberry



55054 17
Blueberry



*55051 17
Blueberry



*55052 17
Blueberry



55056 17
Cream Blueberry



55050 17
Blueberry



Dilly Dally— #TB 152/ TB 152G Finished Quilt Measures 59" x 67"



*55053 14
Blueberry Leaf

55054 16
Grey



55051 16
Grey



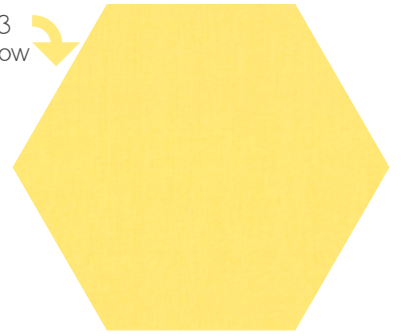
*55057 16
Grey

BELLA Solids

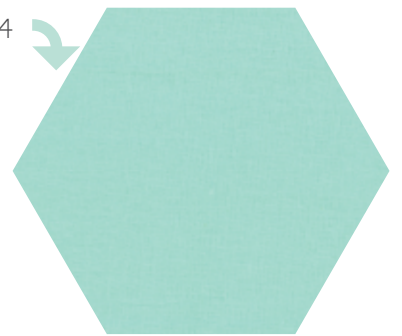
9900 11
Snow



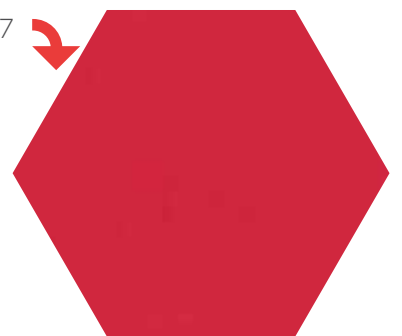
9900 23
30's Yellow



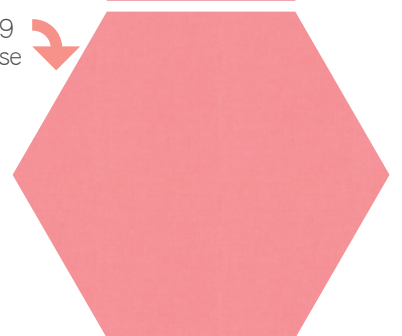
9900 34
Aqua



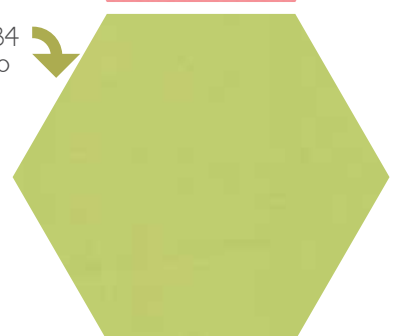
9900 47
Scarlet



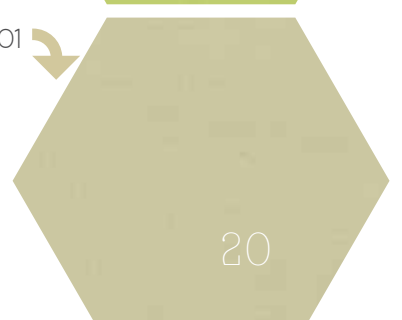
9900 89
Tea Rose



9900 134
Pistachio



9900 201
Sand



16 FLANNEL *Fabrics*



55051 17F
Blueberry



55053 14F
Blueberry Leaf



55054 17F
Blueberry



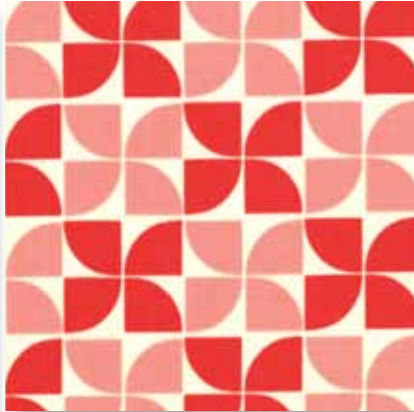
55052 17F
Blueberry



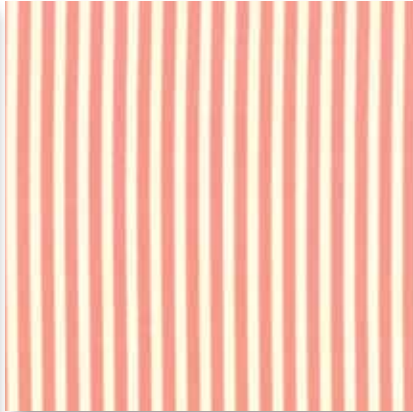
55051 11F
Strawberry



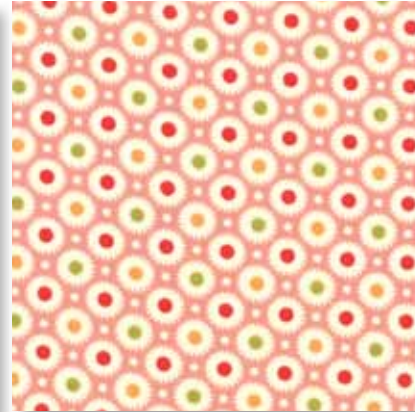
55053 11F
Strawberry Raspberry



55054 11F
Strawberry



55052 11F
Strawberry



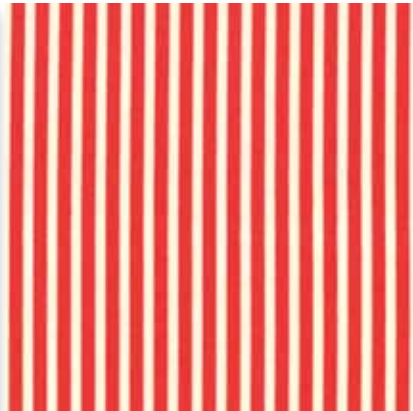
55051 15F
Lemon



55053 15F
Grey Lemon



55054 12F
Raspberry



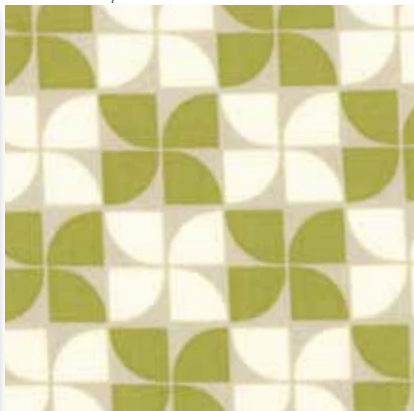
55052 12F
Raspberry



55051 19F
Cream



55053 16F
Grey Leaf



55054 16F
Grey



55052 14F
Leaf



moda



PATTERNS

Additional patterns options from various pattern vendors.
Add "G" to the stock number for the patterns to ship with the fabric.



Spools— #TB 154/ TB 154G Finished Quilt Measures 50" x 62"



Wrapped In Memories— #CN 946/ CN 946G Finished Quilt Measures 61" x 82"

Orange Marmalade— #CW 944/ CW 944G
Finished Quilt Measures 68" x 77"



Star Blossoms — #CW 945/ CW 945G
Finished Quilt Measures 68" x 82"



Pipsqueak Boy & Girl
#CW 947/ CW 947G
Quilt Measures 43" x 43"

October Delivery

SKUS: 40 PRINTS, 4 COATED, 16 FLANNELS
CONTENT: 100% COTTON

PRINTS 40:

- ASST.55050-15 15 YARDS OF EACH
- ASST.55050-10 10 YARDS OF EACH
- ASST.55050-10H 10 YARDS OF 20 SKUS*
- ASST.55050-15T 15 YARDS OF TWILL
- ASST.55050-10T 10 YARDS OF TWILL
- 55050AB BUNDLE: 40 SKUS 18"X22"
- 55050F8 BUNDLE: 40 SKUS 9"X22"
- 55050JR JELLYROLL - (40) 2½"X 45" STRIPS - PK 4
- 55050LC LAYER CAKE - (42) 10"X10" SQUARES - PK 4
- 55050PP (42) 5"X5" SQUARES - PK 12
- KIT55050 - INCLUDES FABRICS FOR TOP & BINDING - PK 1

*Bella Solids are not included in the Precuts or Assortments.

FLANNEL 16:

- ASST.55051-15F 15 YARDS OF EACH
- ASST.55051-12F 12 YARDS OF EACH
- ASST.55051-10F 10 YARDS OF EACH
- 550501ABF BUNDLE: 16 SKUS 18"X22"
- 550501LCF LAYER CAKE - (42) 10"X10" SQUARES - PK 4
- 550501PPF (42) 5"X5" SQUARES - PK 12

*LC's & PP's include two of all and three of 55052 and 55053.

Bonnie & Camille

MARMALADE