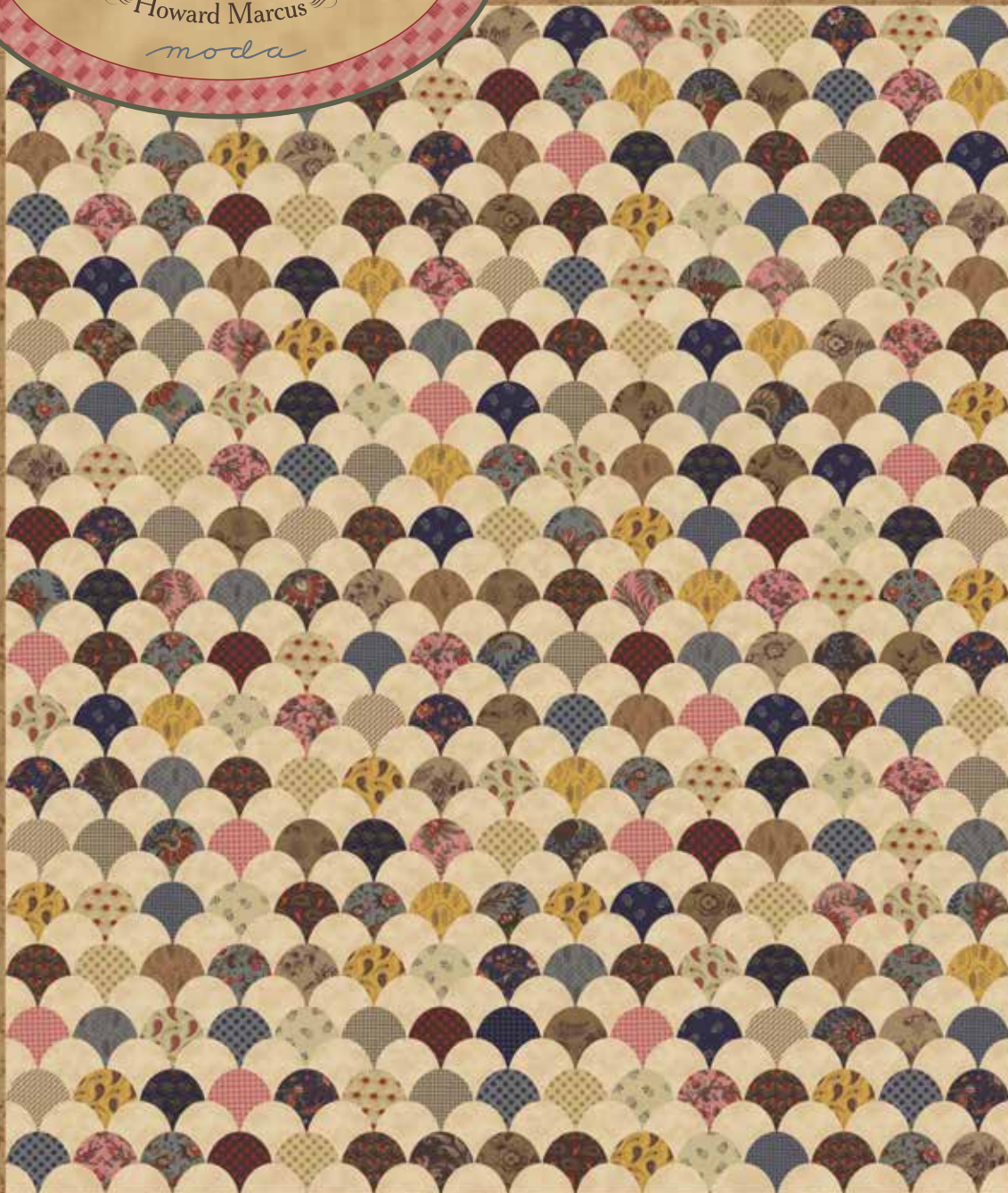


Collection for a Cause

Love

Howard Marcus

moda



Size: 61" x 69"

13th
in a
Series

Supporting the Cause...

Proceeds from this collection will be donated to St. Jude's Children's Research Hospital

Collection for a Cause *Love*

Howard Marcus

moda

Quilters Basics

Read instructions before beginning a project.

All instructions include a 1/4" seam allowance.

Press as you go. Press seams in one direction.

22" measurement is approximate.

WOF = Width of Fabric

Size: 61" x 69"

If you are using a Moda KIT 46160, skip all directions written in red.

Cutting

Fabric 1

Cut 2 – 8"xWOF strips for background header

Cut 28 – 5"xWOF strips

Subcut 11 – 3³/₄"x5" units from each strip for a total of 308 (need 304).

Fabric 2

Cut 8 – 6¹/₂"xWOF strips for outer border

Fabric 3

Cut 7 – 2¹/₂"xWOF strips for binding

Fat Quarters

From EACH of the 27 fat quarters

Cut 3 – 5"xWOF(22") strips

Subcut 11 – 3³/₄"x5" rectangles from the strips for a total of 297 rectangles (need 285).

Stabilizer

Cut 74 – 4"xWOF

Subcut 8 – 2¹/₂"x4" rectangles from each strip for a total of 592 (need 589).

Making the Template

Note: Laser cut templates can be found at the bottom of all laser cut bundles in the Moda KIT.

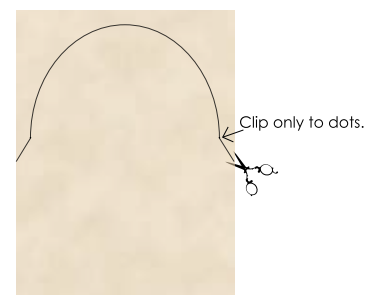
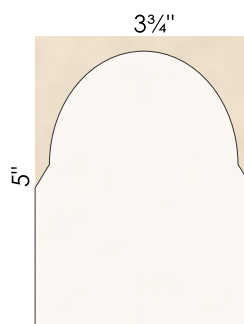
Use template plastic and the enclosed template to trace and prepare the marking template for the tongues.

Mark and cut carefully. The template should measure 3³/₄"x4³/₄".

Marking the Tongues

Note: Each of the 3³/₄"x5" rectangles will make one tongue (clamshell)

1. Align the bottom of the template on the wrong side of a 3³/₄"x5" rectangle.
2. Using a Sewline pencil trace along the top of the template to mark the seam allowance.
3. Use sharp fine pointed scissors to clip the side seam allowances. *See diagram.*



Moda Kit Users

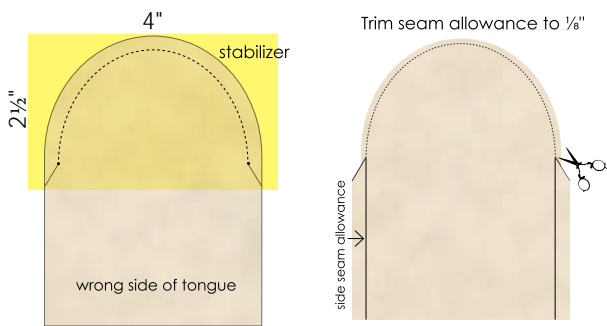
See "How To Make Clamshells" directions on page 4.



Cameo image of Princess Charlotte of Wales and her fiance, Prince Leopold, from the original quilt's border.

Making the Tongues

1. Align and center a 2½"x4" piece of stabilizer on the right side of a marked tongue.
2. Stitch on marked arch between the dots. Be sure to backstitch seam at beginning and end.
3. Trim stitched seam allowance to ¼". Do Not trim side seam allowance. *See diagram.*
4. Turn tongue right side out. Smooth seam allowance using the Tracer Ball in the Sewline Trio pencil. Press.
5. Repeat with **all** of the print and cream tongues before beginning construction.

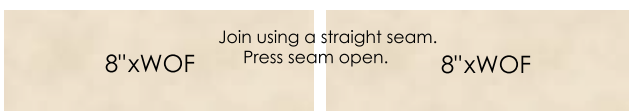


Construction

1. Randomly select 15 print turned tongues.
Note: If you prefer a more orderly color placement for the print tongues, arrange 19 rows of 15 print tongues on a design wall before beginning to stitch.
2. Align bottom edges of the tongues and stitch into rows of 15 print tongues using the ¼" seam allowance on the sides of each tongue. Make 19 rows. Press seams open. *See diagram on page 4.*
3. Repeat to sew 16 cream tongues together into a row. Make 19 rows.

Making the Header

1. Stitch the 2 – 8"xWOF strips together using a straight seam. Press seam open.



2. Measure the length of the cream tongue rows. (approx. 52½")
3. Divide that number by 2. (approx. 26¼")

4. Using the measurement from Step 3, measure outward from center seam in each direction. Mark and trim header to that length as shown below.



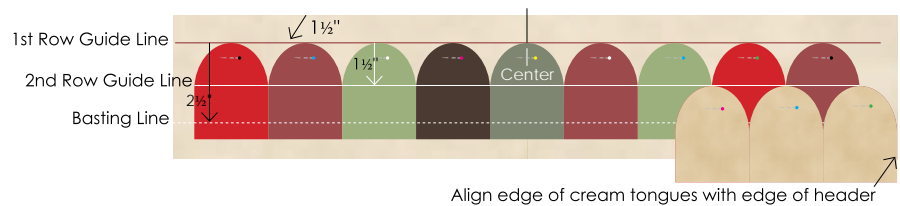
5. Using a mechanical pencil or a water soluble pen, mark a guide line across the width of the header 1½" from top edge as shown.



6. Stay stitch, zig zag or serge top edge of header to avoid fraying during the piecing process.

Assembly

1. Select a stitched row of print tongues.
2. Fold row in half to find center. Finger press.
3. Align center of the row with center seam of the header.
4. Work outward from center to align the top of each tongue in the row with the marked guide line, pinning in place as you go.
5. Measure down 2½" from the top of arranged tongues and draw another guide line. Using a long machine basting stitch, stitch on this line to hold the row of tongues in place. *Note: This seam should catch the bottom of the row of tongues (or the header) behind it.*
6. Choose your favorite appliqué method and appliqué the row of tongues to the header along the top curved edges.
7. Measure down and draw a guideline 1½" from the top of appliquéd tongues. This is the guideline for the next row of tongues.



Assembly – cont.

ADDING A CREAM ROW

- Repeat Steps 1-7 using a row of 16 cream tongues.
Note: The edges (ends) of each cream row should align with the outside edges of the header. As you add additional rows of tongues, be sure to continue to align the edges of the cream rows with the cream rows above.
- Continue adding alternate rows of tongues until 19 rows of print and 19 rows of cream tongues are in place. *The quilt top ends with a cream row.*

Trimming the Quilt Top

Before adding the borders you will need to trim the quilt top.

TOP AND BOTTOM OF QUILT TOP

- Measure $\frac{1}{4}$ " away from the top of the first row of print tongues and trim away remainder of the cream header.
- To trim the bottom of the quilt top measure down $1\frac{3}{4}$ " from the tops of the last row of cream tongues. Draw a guide line and trim on the marked line.

SIDES OF QUILT TOP

- On both sides of the quilt top draw a guideline $\frac{1}{4}$ " past the outside edges of the print tongues. The cream tongues along the sides of the quilt top will be cut approximately in half. Trim on marked line.

Note: It is important to draw the guideline before trimming in case any of the tongues have wobbled a bit. That will allow you to adjust your trim line if necessary.

Outer Border

- Using a diagonal seam join two $6\frac{1}{2}$ "xWOF strips together end to end. Press seam open.
- Repeat with remaining strips to make 3 additional sets of 2.

Outer Border – cont.

- Measure the quilt top from side to side thru the center (approx. $49\frac{1}{4}$ "). Cut two border strips to that measurement. Stitch to top and bottom of quilt top. Press seams toward border fabric.
- Measure quilt top from top to bottom through the center including borders (approx. $69\frac{1}{2}$ ").
- Cut remaining two border strips to that measurement and add to sides of quilt. Press seams toward border fabric.

Finishing

- Using a diagonal seam, join the $7 - 2\frac{1}{2}$ "xWOF strips end to end. Press seams open.
- Fold prepared strip in half wrong sides together and press to make the binding.
- Layer, Quilt and Bind



Collection for a Cause
Love
Template

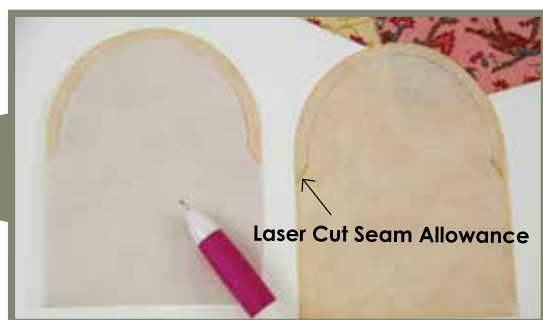
Template is full size and
includes seam allowance.

Template should measure $3\frac{3}{4}$ "x $4\frac{3}{4}$ "

moda

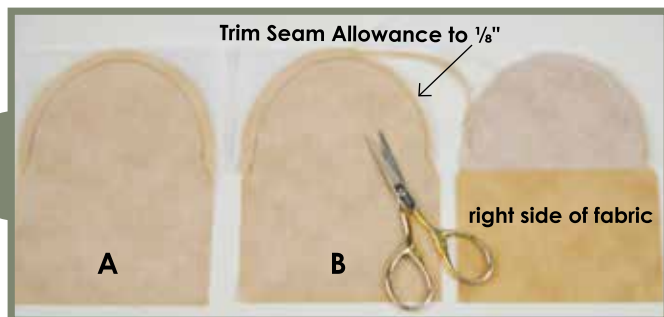


How to make Quick Clamshells using Moda's Laser Cut Fabric Tongues from the Collection for a Cause Love Kit.



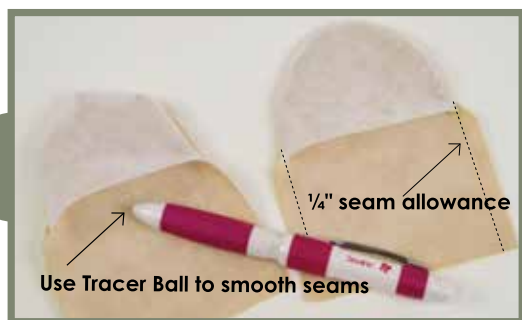
Step 1

Use the laser cut template which is included in every laser cut bundle and a Sewline Mechanical Pencil Trio (Stock#7021) to mark curved seam line on the wrong side of laser cut tongues, both solid and prints.



Step 2

Pair a 2½"x4" piece of stabilizer and a marked tongue right sides together (A). Stitch on marked line (B). Be sure to backstitch at beginning and end of seam. Trim seam allowance to ⅛".



Step 3

Turn stitched stabilizer to back of tongue. Finger press and smooth seam allowance using the Tracer Ball Stylus included in the Sewline Trio. Note the built-in seam allowance that is ready to join tongues into rows.



Step 4

Arrange tongues by color and stitch into rows. Press seams open. Repeat using cream tongues.

moda

MODAFABRICS.COM

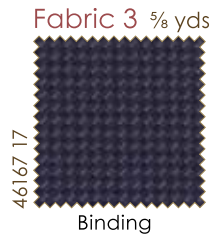
Fabrics reproduced from circa 1825-40 Virginia clamshell quilt.
Original quilt is part of the Howard Marcus Collection.

moda

Collection for a Cause *Love* by *Howard Marcus*

Size: 61" x 69"

Fabric Requirements



Backing – 4 yds. pieced across

• *Skill Level: Intermediate*

FQ – 46160 12



FQ – 46160 13



FQ – 46160 16



FQ – 46161 13



FQ – 46161 14



FQ – 46161 16



FQ – 46162 11



FQ – 46162 15



FQ – 46164 11



FQ – 46164 21



FQ – 46165 13



FQ – 46165 14



FQ – 46165 17



FQ – 46166 11



FQ – 46166 13



FQ – 46166 20



FQ – 46167 11



FQ – 46167 17



FQ – 46167 20



FQ – 46168 14



FQ – 46168 17



FQ – 46168 20



FQ – 46169 12



FQ – 46169 16



FQ – 46170 11



FQ – 46170 12



FQ – 46170 16



Also Needed:

- 8 $\frac{1}{2}$ yds. of 20" lightweight stabilizer (we used Pellon Stabilizer LTWT #30)
- Sewline Trio Marking Pencil with Tracer Ball—#FAB50023
- Small Sharp Fine Point Scissors (We used Omnigrid#1— 4"scissor (#2064)
- Template Plastic if not using laser cut tongues
- Kit yardage may vary from amounts given on this project sheet.

moda

MODAFABRICS.COM

PS46160 — SUGGESTED RETAIL \$6.00

