

Collection for a Cause
Mill Book Series *Circa 1852*

Howard Marcus

14th in a Series

Supporting the Cause
Quilt Alliance

№ PS46180/ KIT46180 Collection for a Cause Mill Book Series Circa 1852 Size: 76" x 91"



moda **KIT**

*Fabrics in this collection were reproduced from an
1852 Mill Book which is part of the Howard Marcus Collection.*



№ 46188 11*
Cream



№ 46171 21
Cream



№ 46181 11*
Cream



№ 46180 11*
Cream



№ 46184 12*
Cream



№ 46186 12
Cream



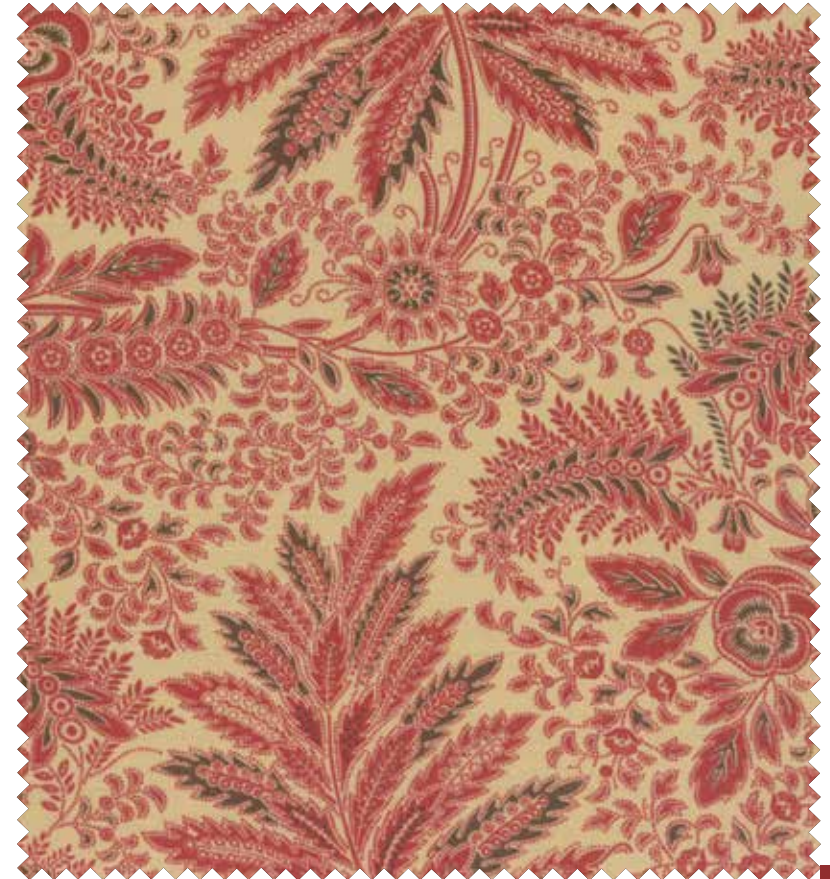
№ 46184 11
Natural



№ 46183 11
Cream



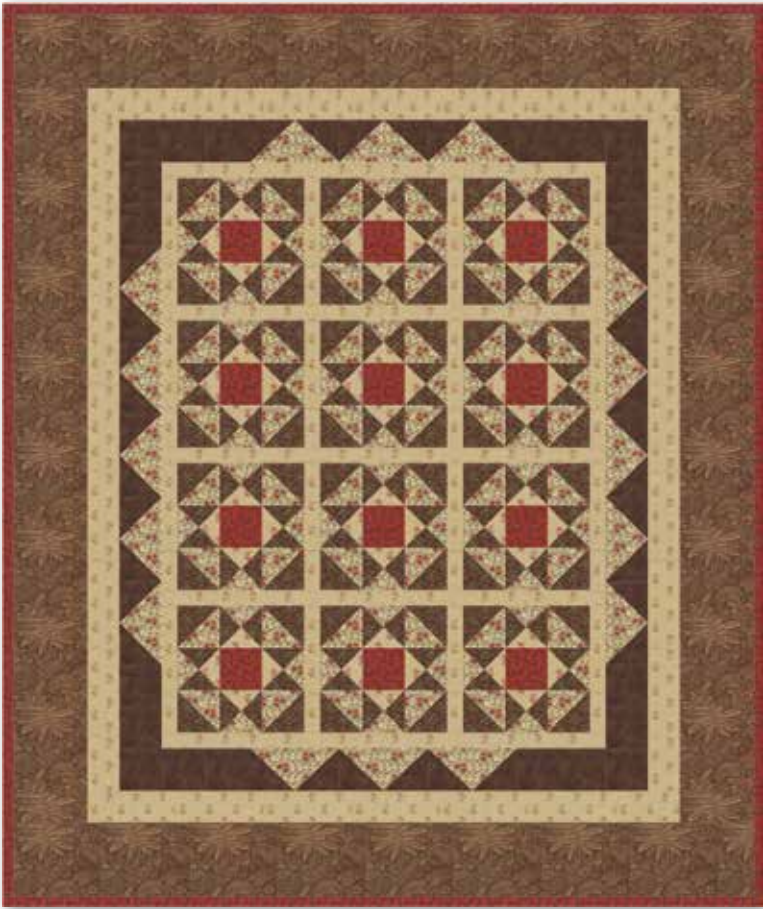
№ 46187 12
Cream



№ 46180 13
Cream



№ 46185 12*
Cream



 **DLL 33 or DLL 33G** *Crossroads* Size: 70"x 83"



No 46183 15
Red



No 46182 11
Cream



No 46180 20*
Red



No 46171 26
Red



No 46181 12
Cream



No 46185 21*
Red



No 46181 18*
Red



No 46182 16*
Red



No 46184 22
Red



No 46186 21*
Red



No 46180 14
Tan

Quilt Alliance

Whose mission is to document, preserve, and share our American quilt heritage by collecting the rich stories that historic and contemporary quilts, and their makers, tell about our nation's diverse peoples and their communities.

In support of this mission, the Alliance brings together quilt makers and designers, the quilt industry, quilt scholars and teachers, and quilt collectors to further the following goals:

- to promote the understanding of the quilt as an important American grassroots art form
- to make information about quilts available to a broad public
- to educate Americans about the importance of documenting quilts and quiltmakers so that their stories will not be lost

For more information or to join the Quilt Alliance, visit: www.allianceforamericanquilts.org



No 46182 12*
Tan



No 46181 13
Tan



No 46180 15*
Tan



No 46185 15
Tan



No 46183 12*
Tan



No 46186 13*
Tan



No 46187 13*
Tan



No 46188 13
Tan



OPQ - Open Gate Quilts

OGQ 092 or OGQ 092G Cobblestone Steps Size: 63"x 79"



№ 46171 23
Brown



№ 46180 16
Brown



№ 46181 16*
Brown



№ 46182 15*
Brown



№ 46184 19*
Brown



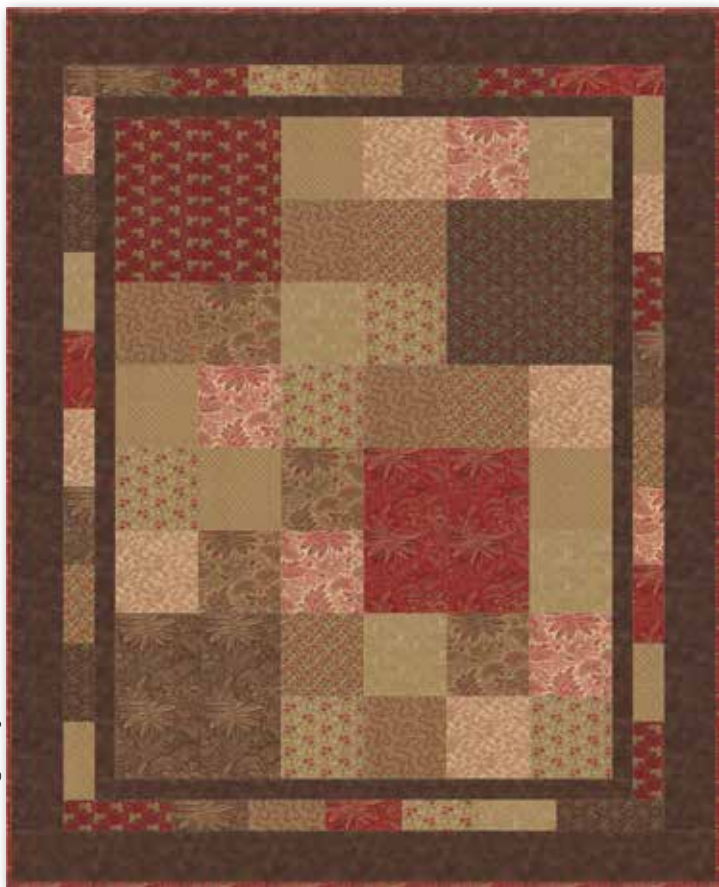
№ 46184 20
Brown



№ 46185 16*
Brown



№ 46186 15
Brown



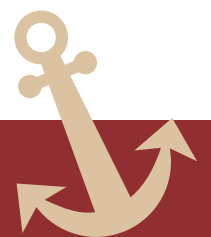
№ 46187 14*
Brown



№ 46188 14
Brown

DLL - Designs by Lavender Lime

DLL 34 or DLL 34G Comfy Size: 68"x 84"



46180

Asst. 15

Asst. 10

Low Cal 20

AB

HC

JR

LC

MC

PP

PS

KIT

moda more patterns

Additional patterns from various pattern designers featuring our newest collections.

Order quilt patterns with a "G" to ship with the fabric collection.

See your sales person for fabric requirements.



Village

CHD 1329/CHD 1329G

62"x 78"

Featured fabric: **Le Bouquet Francais**



Blossom

QLS 106/ QLS 106G

62"x 78"

Featured fabric: **April Showers**



Window Seat

ISE 115/ ISE 115G

34"x 39"

Featured fabric: **April Showers**



Cozy Cabin

PGP 127/ PGP 127G

66"x 88"

Featured fabric: **April Showers**

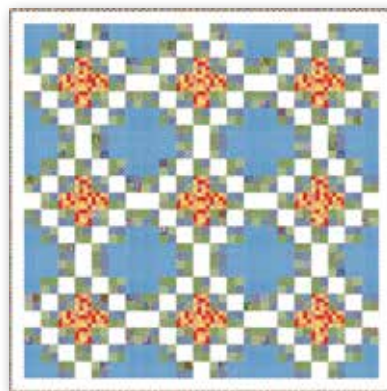


Quack

CHD 1328/ CHD 1328G

62"x 78"

Featured fabric: **Ducks in a Row**

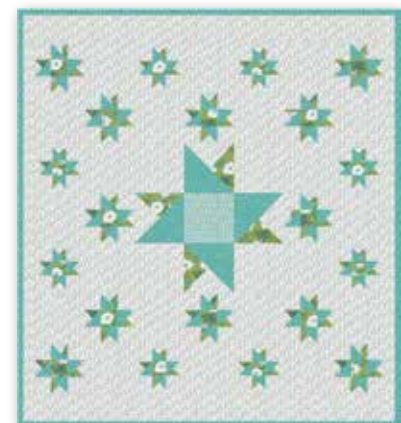


Morocco

PGP 125/ PGP 125G

70"x 70"

Featured fabric: **Ducks in a Row**



Twilight

DLL 35/ DLL 35G

67"x 73"

Featured fabric: **Color Me Happy**

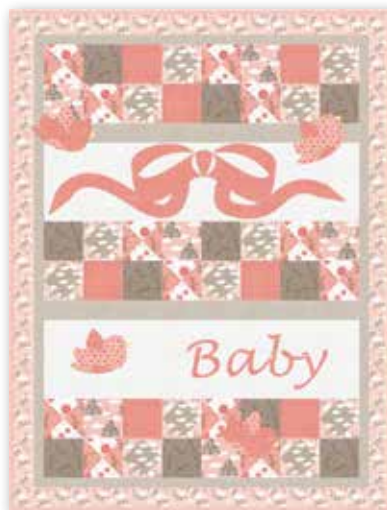


Sunbeams

ISE 145/ ISE 145G

48"x 60"

Featured fabric: **Mirabell**



Baby Bird

CHD 1324/ CHD 1324G

62"x 78"

Featured fabric: **Storybook**



Just for the Frill of It

ISE 146/ ISE 146G

42"x 54"

Featured fabric: **Chance of Flow**

237 and Counting!

Tell us your favorite Bella Color

Order the latest Bella Colorcard

Stock# CC403



Bella Solids Quilts



my inspiration...

“My quilt designs always start with the color palette. The inspiration can come from anywhere but it's typically a beloved object like my son's pajamas, a favorite scarf, or, in the case of Turkish Delight, a vintage paper plate. I use my Bella Solids color card to get the perfect color match, add in neutrals as needed, and then let those colors guide me in designing a quilt pattern to show them off. The patterns I've created for Bella Solids showcase my vintage modern aesthetic and appeal to a range of skill levels. Each pattern includes a suggested color palette and tips for creating your own color story.”



① VMQ 1303
Lucky Strike
Size: 63"x80"



②



② VMQ 1302
Mid Century
Size: 63"x74"

③



③ VMQ 1301
Turkish Delight
Size: 82"x82"

Make a Splash,

MODA

*What do you get when you cut
a layercake in half diagonally?*

A SLICE

42 DELICIOUS 10" TRIANGLES
MEET OUR NEWEST PRE-CUT READY TO BRING NEW AND
UNIQUE STYLE TO YOUR NEXT PROJECT



*Make your own Splash quilt
with thi custom **SLICE** which contains:*

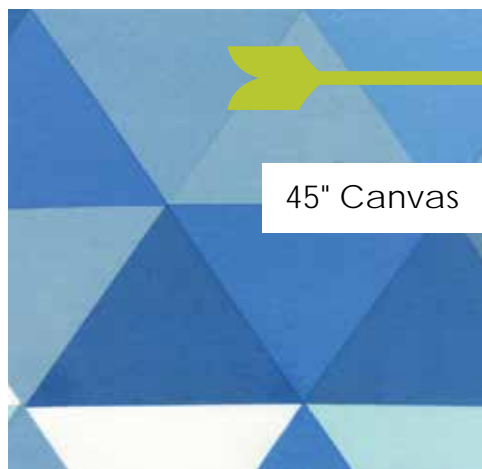
**48 - 10" TRIANGLES IN 12 ASSORTED NEW BELLA™ COLORS
and the Make a Splash pattern!**

You will also need 2¾ yds of blue (9900-236), ¾ yd of white (9900-98)
and ¾ yd of green (9900-266) to complete the quilt.

Delivery: November, 2013 2014



**No 12706 11
Aqua**



**No 12706 12
Blue**

*Perfect for:
Bags
Umbrellas
Cushions
Shower Curtains
Clothing*

Delivery: April, 2014