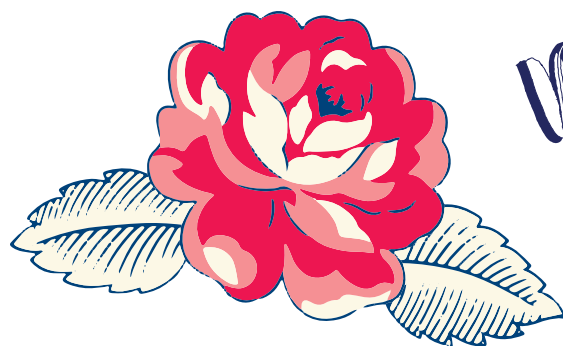


New Designer



Feed Sacks: TRUE BLUE

Linzee Kull McCray

@seamswrite

Leave No Scrap Behind

Imagine growing your own vegetables and canning them, cleaning and cooking without modern appliances, and sewing clothes for your seven children. Feed Sacks: True Blue pays homage to the women who did all that and still took the time to stitch rickrack on a dishtowel, embroider a sweet bunny on the bodice of a baby's romper, and use up every last scrap to create a quilt of warmth and beauty.



PS 23300 True Blue Size: 68" x 80"

23300 16

23306 16

23305 16



23308 16



23304 16



23309 16



23307 21



23302 22



23301 21



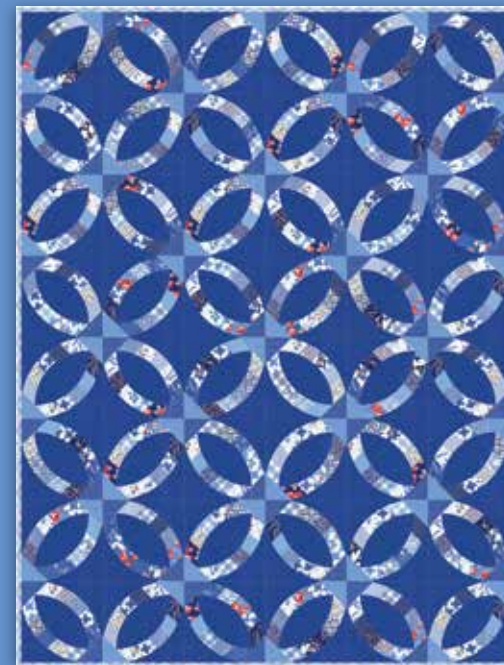
23300 11



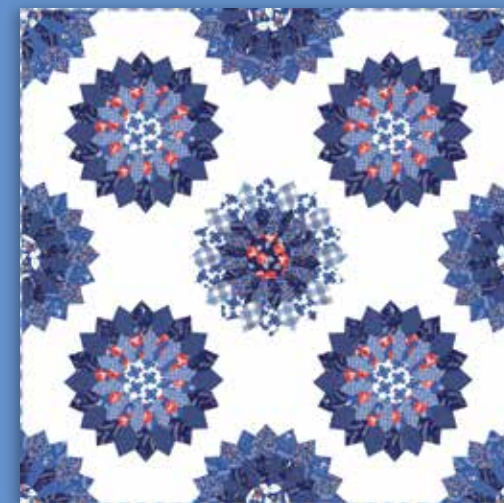
23306 21



23307 13



JK friendly pattern by Sew Kind of Wonderful
SKW 402 / SKW 402G
Metro Rings Size: 57" x 76"

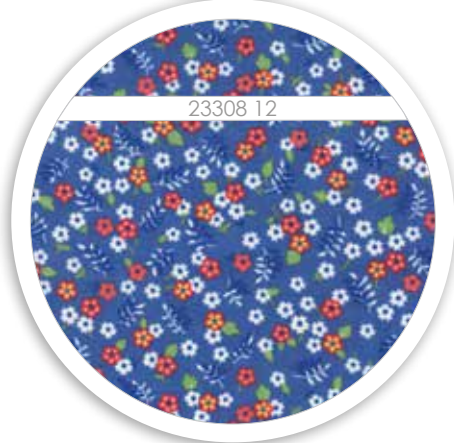
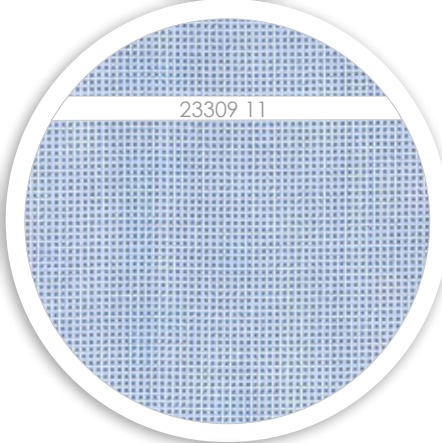


pattern by May Chappell
MC 029 / MC 029G Blooming Dresden
Size: 56" x 56"

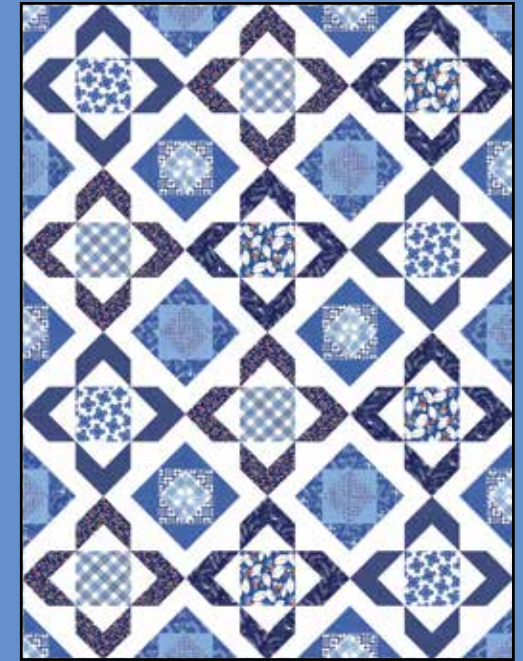
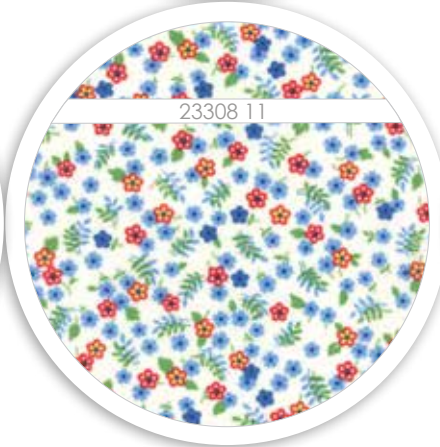
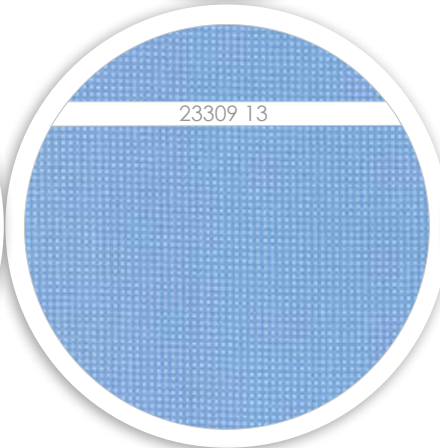


Feed Sacks: TRUE BLUE

Linzee Kull McCray @seamswrite

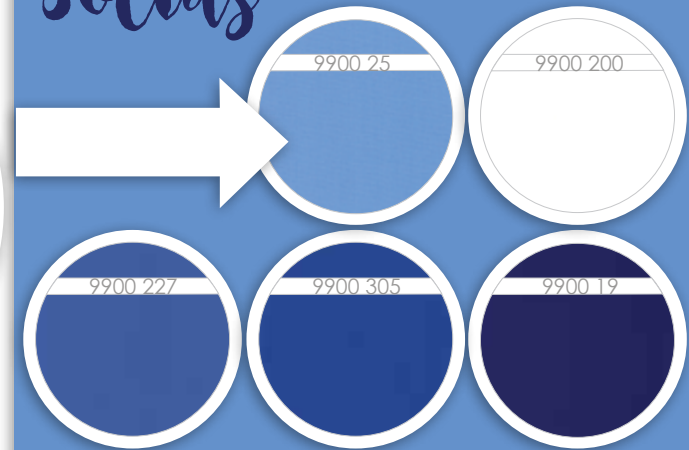


TIN SET 5 Set of 3 nested tins
Sm: 4" tall x 3 1/4" dia.
Md: 5 1/4" tall x 3 3/4" dia.
Lg: 6 1/2" tall x 5" dia.



pattern by May Chappell
MC 023 / MC 023G Lulees Garden
Size: 54" x 72"

Bella Solids



23300

Asst. 15

Asst. 8

AB F8 JR LC MC PP PS

• 30 Prints • 100% Premium Cotton
JR's, LC's, MC's and PP's include two each of 23301, 23307 and 23309.
Assortments and Pre-Cuts do not include Bella Solids

FEED SACKS: TRUE BLUE
by LINZEE KULL McCRAY
April Delivery

08