

# Winter Flurries

## Holly Taylor

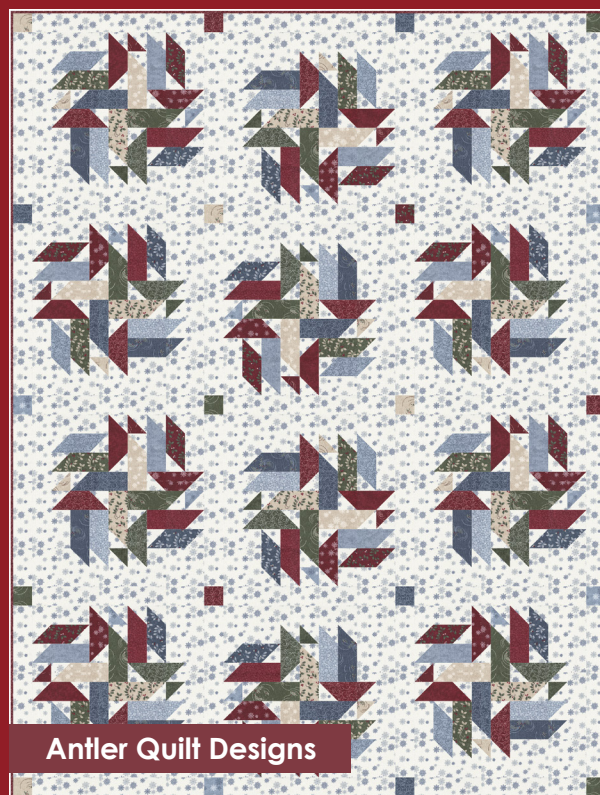
As winter begins to set in, and the air is brisk and cold, our world takes on a frosty look in shades of blue and gray. Even the light changes as the sky has a different cast from previous seasons. As the filtered sun hits the tips of branches, it turns the frost into a sparkling blue, and when the snow begins to swirl, the only other visible colors are the evergreens, and the red berries left on the bare branches of bushes. Thus, the inspiration for Winter Flurries.

*moda* FABRICS + SUPPLIES® **JULY DELIVERY**



Antler Quilt Designs

**AQR 0250** Black Tie Affair 72" x 83"



Antler Quilt Designs

**AQR 0258** Kings Cross 62" x 82"



The Quilt Factory

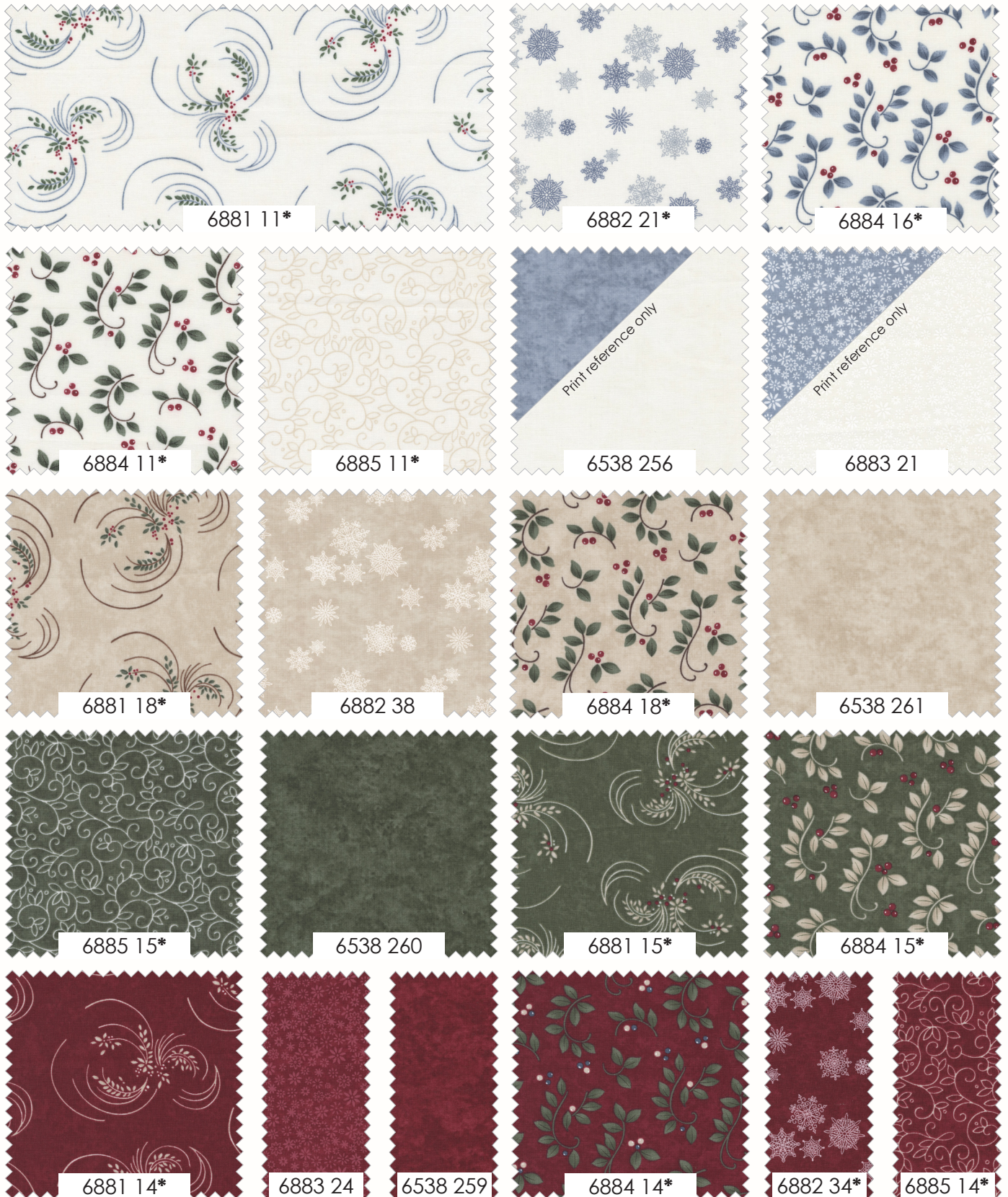
QF 2120 Crimson Majesty 83" x 83"



My Wandering Path

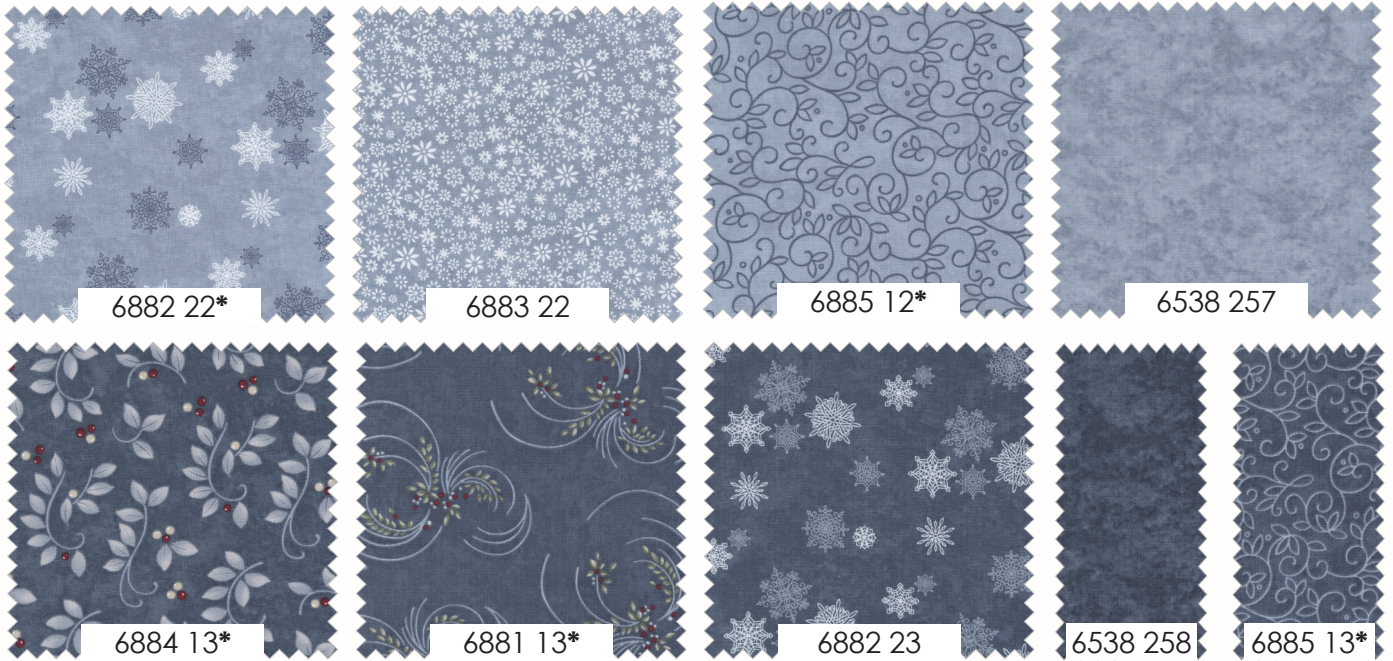
MWP 221 Blizzard Stars 50" x 62"

# Winter Flurries Holly Taylor



moda FABRICS + SUPPLIES® JULY DELIVERY

# Winter Flurries Holly Taylor



6880 13



6880 14\*

Panels measure 24" x 44". Frames are 5" x 7".

6880

Asst.  
15

Asst.  
10

Low Cal  
10

AB

F8

JR

LC

MC

PP

JULY DELIVERY

•32 Prints    •100% Premium Cotton

ABs include one panel - 6880-14. F8s, JRs, LCs, MCs & PPs do not include panels.  
JR, LC, MC & PP include 30 skus plus two each of 6884, 6885-11, 13, 14 & 15.